

WEC MODEL 60

TEMPERATURE CONTROLS PTY LTD Certificate No: QEC 14412
AS/NZS 9001:2000

CONDITIONS

THIS DRAWING IS OUR EXCLUSIVE PROPERTY AND MUST NOT BE COPIED OR HANDED TO ANY OTHER PARTIES WITH OUT WRITTEN PERMISSION. IT SHALL BE RETURNED UPON REQUEST

SYDNEY : 7 YAMMA ST SEFTON , NSW 2162
PHONE : (02) 9721 8644 FAX : (02) 9738 9339
MELBOURNE : 412 MORELAND ROAD
BRUNSWICK WEST VIC 3055
PHONE : (03) 9384 0444 FAX : (03) 9384 0204
EMAIL : sales@temperature.com.au



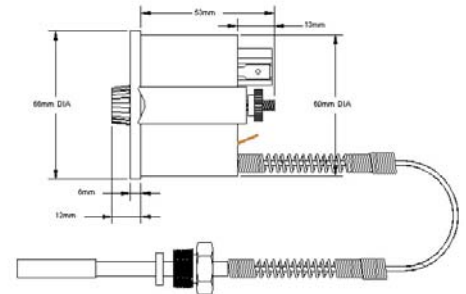
TITLE

SIZE : A4	DATE : 24/03/05	DWG NO : SD 477
SCALE : NTS	DRAWING BY H.A	REV : 00

REMOTE READING THERMOMETERS M60 SERIES

New gas filled electromechanical temperature controller

- Application:** Generally used for temperature control and monitoring in chemical equipment and medical apparatus, in climatic cabinets, high-pressure cleaners, washing machines, heating and cooling plants, industrial ovens compressors etc
- Case:** Plastic (ABS Thermoplast), black, Ambient temperature max. +70°C
- Dial:** White background, black figures
- Protection:** IP 53 front
- Bulb:** Brass 8mm Ø
- Capillary:** Copper Ø 1mm, with copper braiding standard length 1.5m
- Accuracy:** ± 1,5% of span
- Indication:** Linear, deflection approx. 260°
- Mounting:** Retaining bracket at the rear
Panel cut-out Ø 62 +0.5mm
-0.0mm
- Measuring System:** Non-toxic organic liquid expansion
- Microswitch:** Change over contact 5 A, 250V~
- Setpoint Adjustment:** By rotation of knob at the front, limited by internal stops at beginning and end of scale.
Protected against damage, by a slipping clutch
- Switching differential:** Approx. 2% of span
- Switching Accuracy:** ±0,5% of span on rising temperature
- Standard Ranges:** -30 to 50°C, 0 to 120°C, 0 to 160°C, 0 to 250°C,
+50 to 350°C, others upon request



Ex-stock unit M60
Range 0—160 °C
Part No. TCWECM60

Email for additional information and pricing.

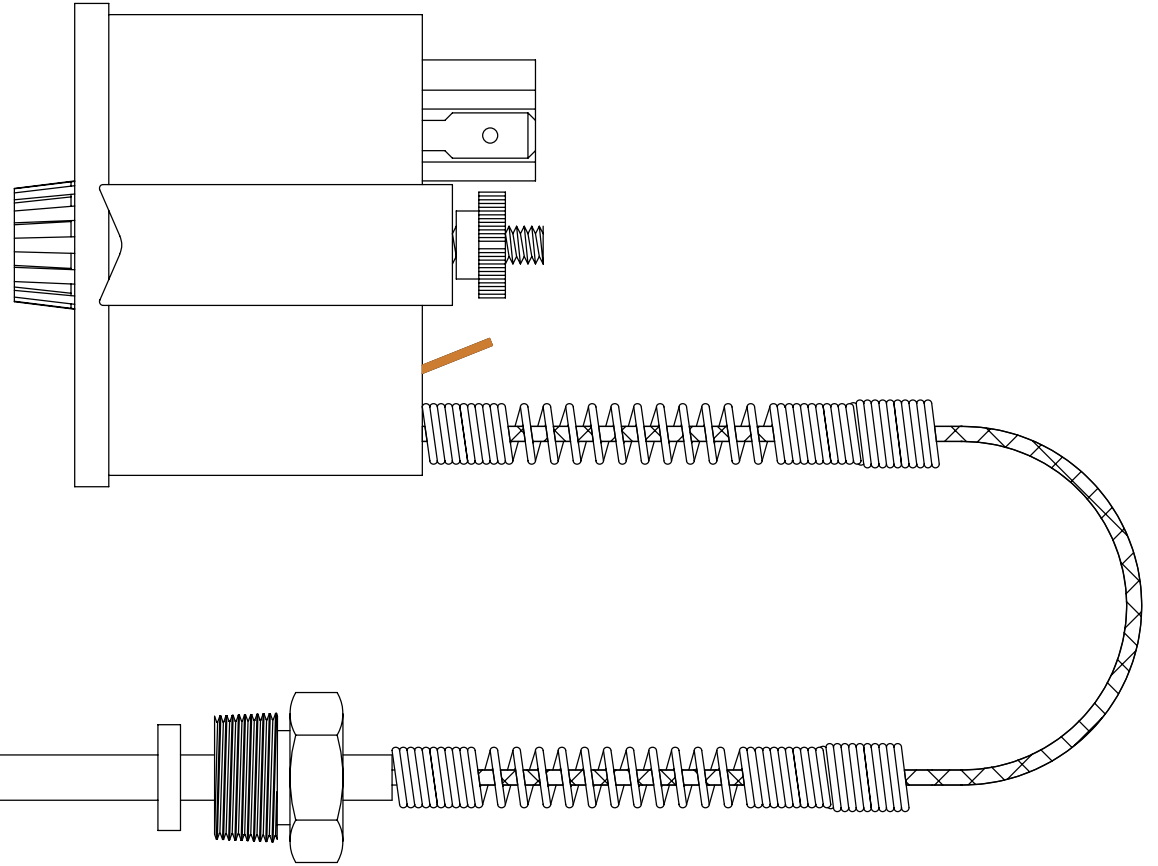
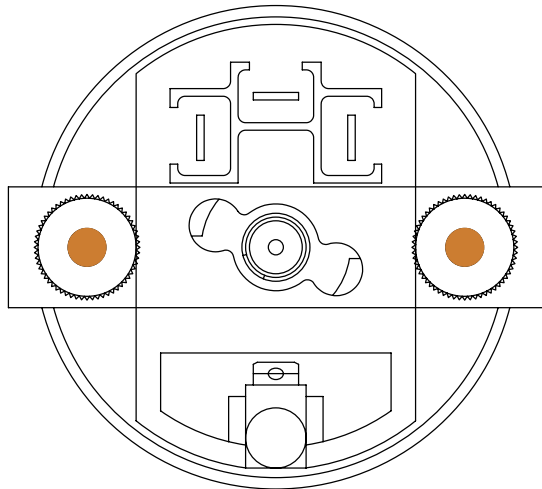
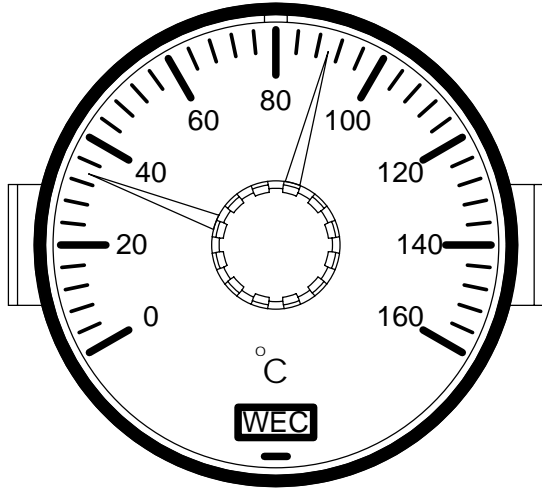
Temperature Controls Pty Ltd

Sydney: 7 Yamma St Sefton NSW 2162 Ph: (02) 9721 8644 Fx (02) 9738 9339

Melbourne: 8/280 Whitehall St Yarraville VIC 3013 Ph: (03) 9687 0000 Fx: (03) 9687 1900

Web : www.temperature.com.au Email: sales@temperature.com.au

Due to ongoing product development, specification and price may change without notice. Prices do not include GST



<p>WEC MODEL 60</p>	<p>TEMPERATURE CONTROLS PTY LTD</p>		<p>Certificate No: QEC 14412 AS/NZS 9001:2000</p>	
	<p>CONDITIONS</p> <p>THIS DRAWING IS OUR EXCLUSIVE PROPERTY AND MUST NOT BE COPIED OR HANDED TO ANY OTHER PARTIES WITH OUT WRITTEN PERMISSION. IT SHALL BE RETURNED UPON REQUEST</p>		<p>SYDNEY : 7 YAMMA ST SEFTON , NSW 2162 PHONE : (02) 9721 8644 FAX : (02) 9738 9339 MELBOURNE : 412 MORELAND ROAD BRUNSWICK WEST VIC 3055 PHONE : (03) 9384 0444 FAX : (03) 9384 0204 EMAIL : sales@temperature.com.au</p>	
				<p>TITLE</p>
	<p>SIZE : A4</p>	<p>DATE : 24/03/05</p>	<p>DWG NO : SD 477</p>	
<p>SCALE : NTS</p>		<p>DRAWING BY H.A</p>	<p>REV : 00</p>	



TEMPERATURE CONTROLS PTY LTD

ACN: 075 298 592 ABN: 76 075 298 592

7 YAMMA STREET SEFTON, NSW 2162 AUSTRALIA

PHONE: 61 2 9721 8644 FAX: 61 2 9738 9339

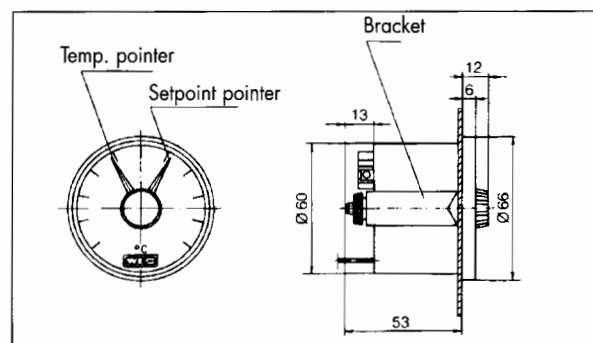
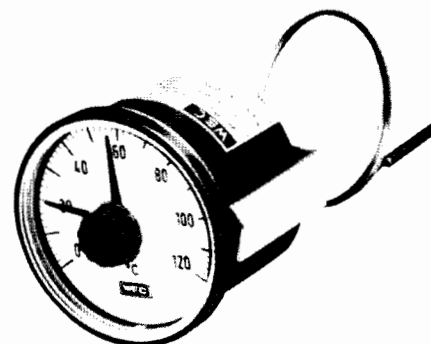
INTERNET: www.temperature.com.au EMAIL: sales@temperature.com.au



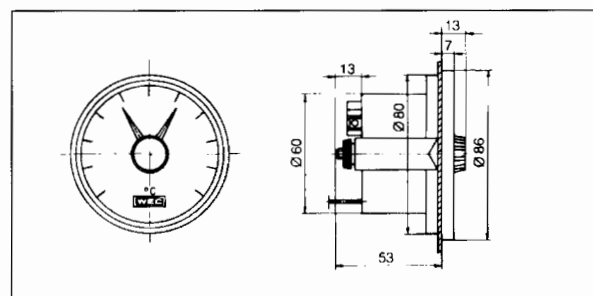
Quality Endorsed Company
ISO9001:2000
Lic 14412

New electromechanical temperature controller according to DIN 3440.

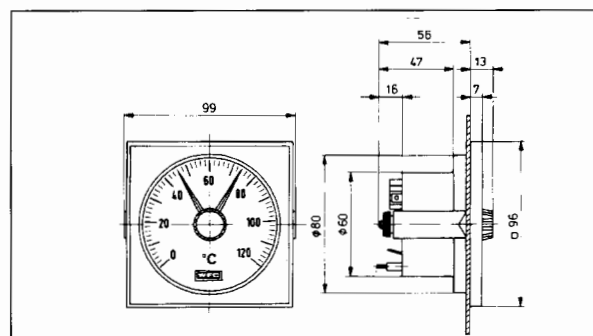
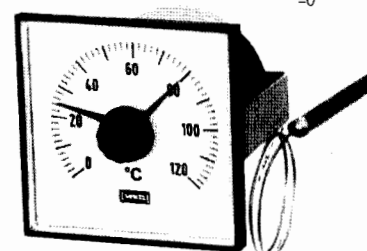
Application	Generally used for control and monitoring in chemical equipment and medical apparatus, in climatic cabinets, high-pressure cleaners, washing machines, heating and cooling plants, industrial ovens, etc.
Functional description	Changes in temperature are converted without gearing by a measuring tube into the rotation of the pointer spindle, which operates the microswitch through a mechanical device.
Case	Plastic (ABS Thermoplast), black. Ambient temperature max. +70°C.
Dial	White background, black figures.
Protection	IP 53 front.
Bulb	Brass \varnothing 8 mm.
Connection types	See overleaf.
Capillary	Copper \varnothing 1 mm, with copper braiding or PVC \varnothing 3÷4 mm; standard length de 1m; 1,5 m; 2 m, 3 m, 4m.
Accuracy	$\pm 1,5\%$ of span.
Indication	Linear, deflection approx. 260°
Mounting	By retaining bracket at the rear.
Measuring system	Non-toxic organic liquid expansion.
Microswitch	Changeover contact 5 (1,5) A, 250V~, $\cos \varphi = 1$
Setpoint Adjustment	By rotation of knob at the front, limited by internal stops at beginning and end of scale. Protected against damage, by a slipping clutch.
Switching differential	Approx. 2% of span.
Switching accuracy	$\pm 0,5\%$ of span on rising temperature.
Standard ranges	- 30 + 50°C 0 + 120°C 0 + 160°C 0 + 250°C + 50 + 350°C Others upon request.
Optional equipment	Bezel chromium plated. Terminals protected by cap against access, splashproof. IP 54. Bulb protecting pockets (thermowell)
Models T60, T80 and T96	Temperature indicator only, without electrical elements.



M-60
Panel cut-out $\varnothing 62+0,5$
-0



M-80
Panel cut-out $\varnothing 82+0,5$
-0



M-96
Panel cut-out $\varnothing 82+0,5$
-0

REMOTE READING THERMOMETERS
Serie Microtermo M 60, M 80 and M 96

TEMPERATURE CONTROLS PTY LTD

ACN: 075 298 592 ABN: 76 075 298 592

7 YAMMA STREET SEFTON, NSW 2162 AUSTRALIA

PHONE: 61 2 9721 8644 FAX: 61 2 9738 9339

INTERNET: www.temperature.com.au EMAIL: sales@temperature.com.au

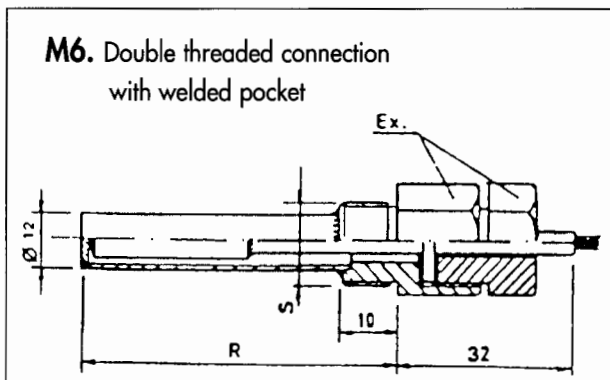
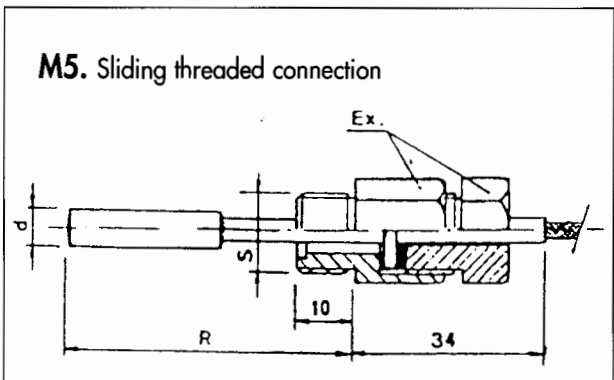
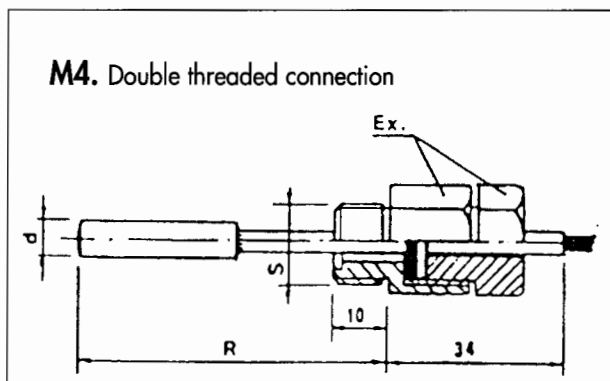
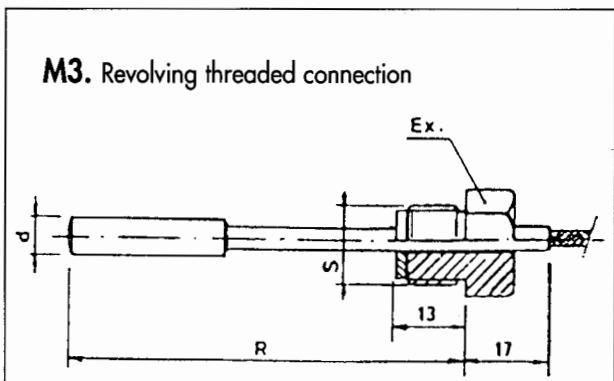
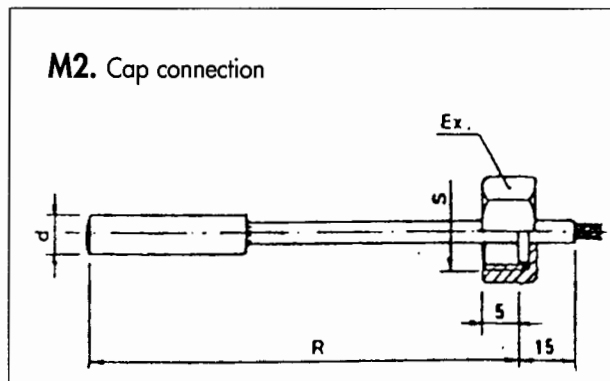
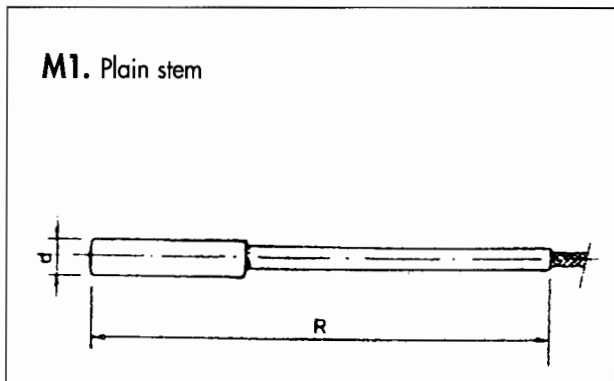


Quality
Endorsed
Company

ISO9001:2000

Lic 14412

BULBS AND CONNECTION TYPES



Ø bulb d in mm	Standard temperature ranges (°C)					Ø Pockets D in mm
	-30+50	0+120	0+160	0+250	+50+350	
Minimum R length (mm)						
8	60	45	38	34	30	12

Connection material: Brass
Standard thread S: 3/8"G, Ex. 20

Other types and sizes upon request.

REMOTE READING THERMOMETERS
Serie Microtermo M 60, M 80 and M 96