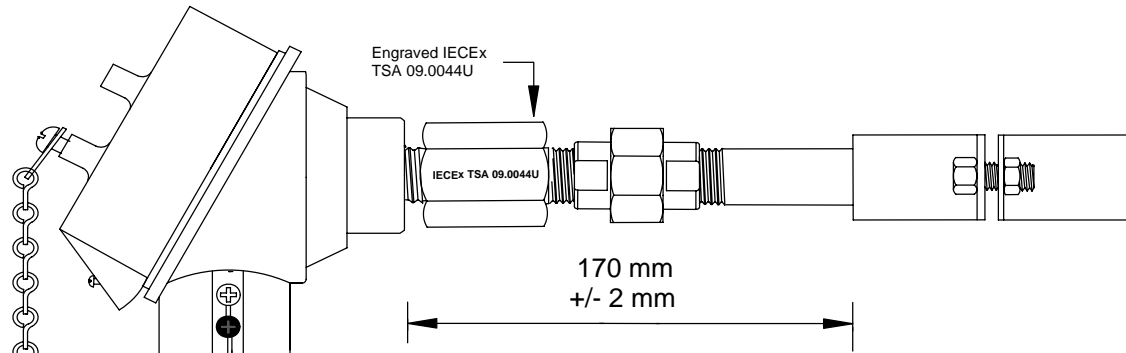


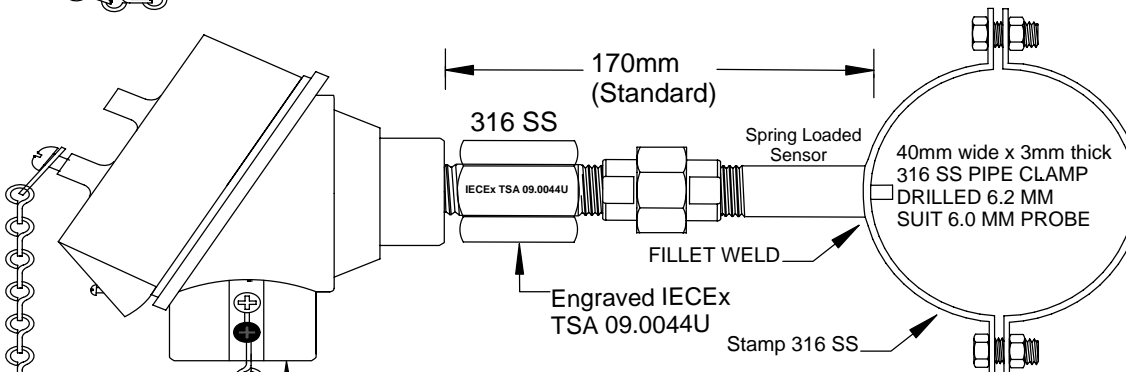
Ex de / Ex tD Element Spring Loaded Nipple Connection With 316 Stainless Steel Terminal Head with Heavy Duty Pipe Clamp

Line Size	Nominal OD
50mm (2")	60.3mm
80mm (3")	88.9mm
100mm (4")	114.3mm
150mm (6")	168.3mm
200mm (8")	219.1mm
250mm (10")	273.1mm
300mm (12")	323.9mm
350mm (14")	355.6mm
400mm (16")	406.4mm
450mm (18")	457.2mm
500mm (20")	508.0mm



Cable Entry
M20 x 1.5mm

170 mm
+/- 2 mm



Cable Entry
M20 x 1.5mm

170mm
(Standard)

316 SS

Engraved IECEX
TSA 09.0044U

Stamp 316 SS

Spring Loaded
Sensor

FILLET WELD

40mm wide x 3mm thick
316 SS PIPE CLAMP
DRILLED 6.2 MM
SUITS 6.0 MM PROBE

- SINGLE
- DUPLEX
- TYPE K THERMOCOUPLE
- TYPE N THERMOCOUPLE
- 3 WIRE RTD PT100
- 4 WIRE RTD PT100

316 Stainless Steel Enclosure - Ex d Flameproof and DIP dust

IME - IECEX Flameproof Ex de Terminal Head only – Cable entry M20
Ex de IIC Gb / Ex tb IIIC Db IP68 Ta = -40°C to 85°C
Certificate No. IECEX SIR 09.0006U
Model No. TC20EXD1SS (Series 1080)
As per certificate 1488

Certified MIMS THERMOCOUPLE OR MIMS RTD Sensor

Ex de Dual Certified Temperature Element Spring Loaded Nipple Connection

For applications where the Temperature sensor is to be used in
T5 TO T1 Temperatures a 50 mm Lagging Extension shall be fitted
to ensure the Enclosure remains below T6 Temperature rating.
Certificate No: IECEX TSA 09.0044U
Model No TCSPREX
As per Certificate 1368

IECEX Dual certified Ex de IIC T6 IP66 or Ex tD A21 T6 IP66

IECEX Certificated of Conformance No : IECEX TSA 09.0044U
as a component

TEMPERATURE CONTROLS PTY LTD

QUALITY ENDORSED COMPANY
Certificate No: QEC 14412
AS/NZS 9001:2008

CONDITIONS

THIS DRAWING IS OUR
EXCLUSIVE PROPERTY
AND MUST NOT BE
COPIED OR HANDED
TO ANY OTHER PARTIES
WITH OUT WRITTEN
PERMISSION. IT SHALL
BE RETURNED UPON
REQUEST

SYDNEY: 7 YAMMA ST SEFTON , NSW 2162
PHONE: (02) 9721 8644 FAX : (02) 9738 9339
MELBOURNE: 8/280 Whitehall St YARRAVILLE, VIC 3013
PHONE: (03) 9687 0000 FAX : (03) 9687 1900
BRISBANE: 28A/125 Kerry Road, Archerfield Qld 4108
PHONE: 0418 222 868
EMAIL: sales@temperature.com.au

TITLE

SIZE : A4

DATE : 27/11/13

DWG NO : SD 824

SCALE : NTS

DRAWING BY R.B

REV : 02