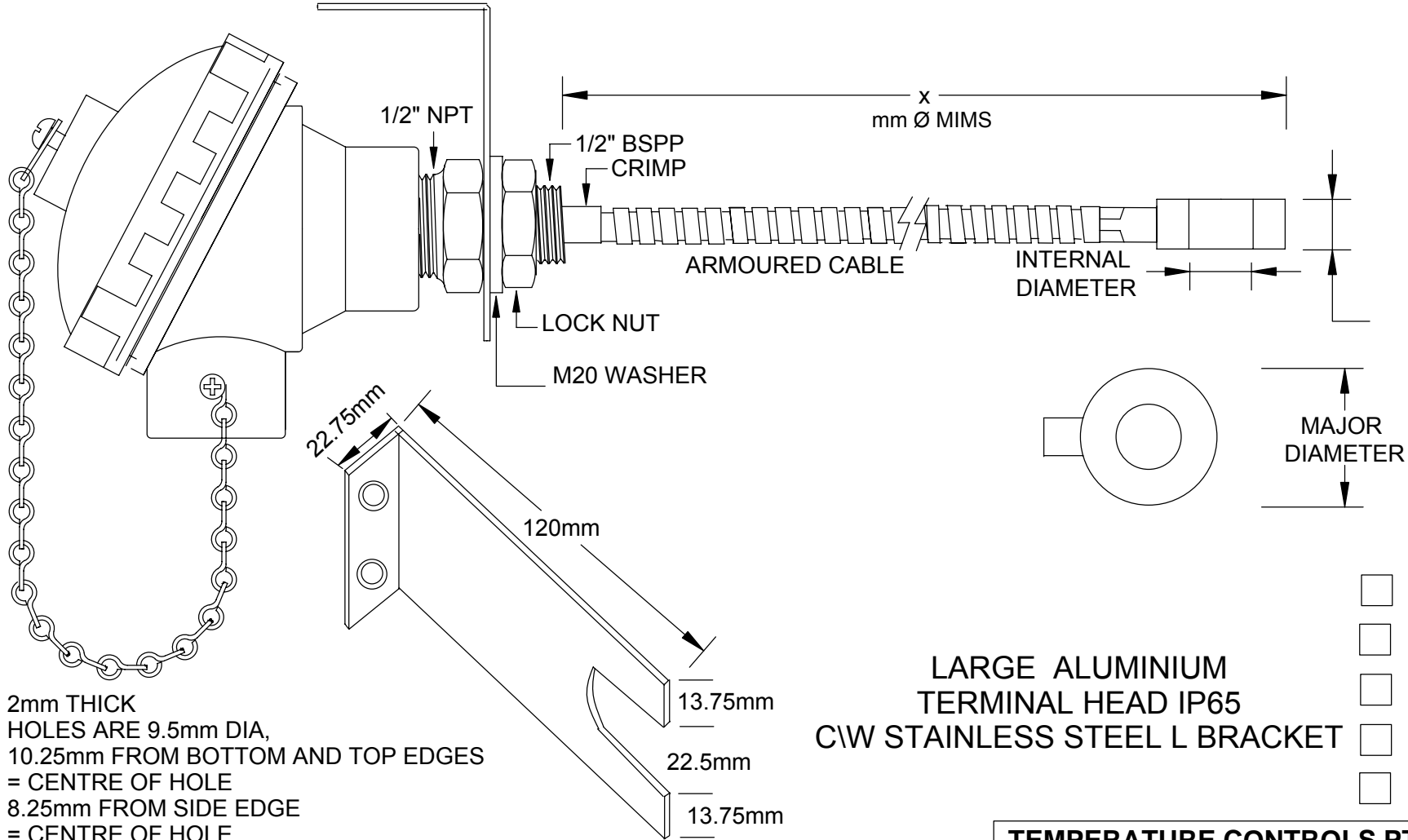


SS L BRACKET WITH 2 MOUNTING HOLES



2mm THICK  
 HOLES ARE 9.5mm DIA,  
 10.25mm FROM BOTTOM AND TOP EDGES  
 = CENTRE OF HOLE  
 8.25mm FROM SIDE EDGE  
 = CENTRE OF HOLE

- Option – “Ex n” Hazardous area application  
 Compliance with  
 IEC 60079-15:2010 Equipment Protection “n”  
 Clause 6.5.1, ‘Insulation from earth or frame’. (1047 “Ex n” Rev 02)
- OPTION - Ex ia  
 Compliance with ANSI AS/NZS 60079. 11.2006 Explosive Atmospheres,  
 Intrinsic safety Ex ia (1047 RTD & TC)

LARGE ALUMINIUM  
 TERMINAL HEAD IP65  
 C/W STAINLESS STEEL L BRACKET

- TYPE K THERMOCOUPLE
- TYPE N THERMOCOUPLE
- TYPE J THERMOCOUPLE
- TYPE T THERMOCOUPLE
- RTD PT100

**TEMPERATURE CONTROLS PTY LTD**

Certificate No: QEC 14412  
 ISO 9001

**CONDITIONS**

THIS DRAWING IS OUR  
 EXCLUSIVE PROPERTY  
 AND MUST NOT BE  
 COPIED OR HANDED  
 TO ANY OTHER PARTIES  
 WITH OUT WRITTEN  
 PERMISSION. IT SHALL  
 BE RETURNED UPON  
 REQUEST

SYDNEY : 7 YAMMA ST SEFTON , NSW 2162  
 PHONE : (02) 9721 8644 FAX : (02) 9738 9339  
 MELBOURNE : 8/280 Whitehall St  
 YARRAVILLE VIC 3013  
 PHONE : (03) 9687 0000 FAX : (03) 9687 1900  
 EMAIL : sales@temperature.com.au



TITLE		
SIZE : A4	DATE : 27/01/11	<b>DWG NO : SD 695WA</b>
SCALE : NTS	DRAWING BY R.B	<b>REV : 00</b>