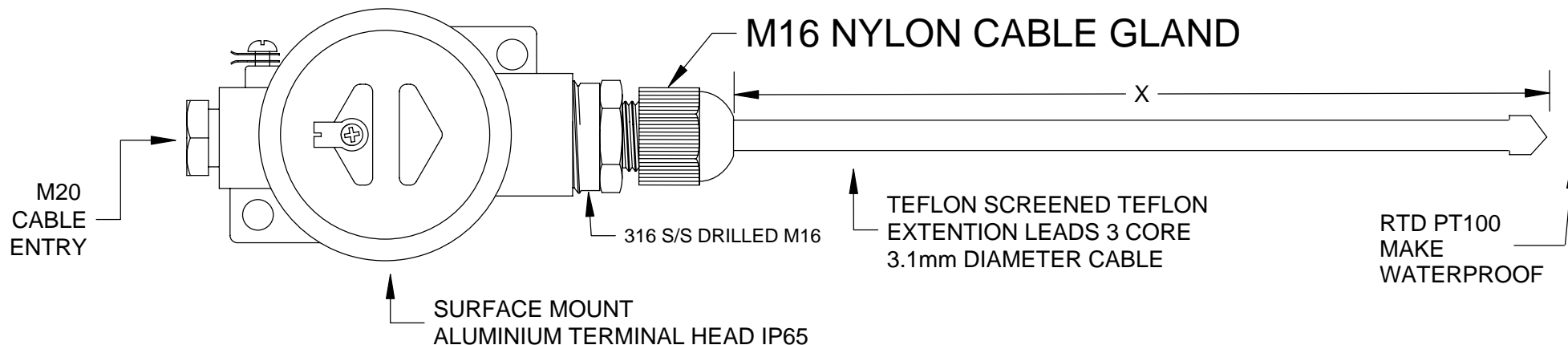
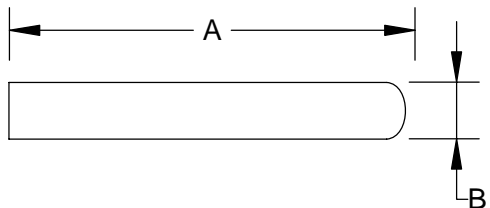


WATERPROOF RTD ASSEMBLY



OPTION: Protective stainless steel sheath



OPTION - Ex ia
 Compliance with ANSI AS/NZS 60079. 11.2006 Explosive Atmospheres,
 Intrinsic safety Ex ia (1047 RTD & TC)

RTD PT100 SENSOR WATERPROOF TEFLON ASSEMBLY C/W DRAIN WIRE

TEMPERATURE CONTROLS PTY LTD Certificate No: QEC 14412
 ISO 9001:2008

CONDITIONS
 THIS DRAWING IS OUR EXCLUSIVE PROPERTY AND MUST NOT BE COPIED OR HANDED TO ANY OTHER PARTIES WITH OUT WRITTEN PERMISSION. IT SHALL BE RETURNED UPON REQUEST

SYDNEY : 7 YAMMA ST SEFTON , NSW 2162
 PHONE : (02) 9721 8644 FAX : (02) 9738 9339
 MELBOURNE : UNIT 8 / 280 WHITEHALL ST
 YARRAVILLE VIC 3013
 PHONE : (03) 9687 0000 FAX : (03) 9687 1900
 EMAIL : sales@temperature.com.au



TITLE		
SIZE : A4	DATE : 05/12/12	DWG NO : SD 520
SCALE : NTS	DRAWING BY R.B	REV : 02